

you can
Canon

PowerShot S2 IS

Shake-free stills and movies...



...with lots of extras.



Versatility. Flexibility. Creativity.

From the moment you switch it on, it's clear the PowerShot S2 IS is different. Its compact, intuitive design houses a remarkable Canon 12x optical zoom lens that delivers pinsharp precision and vibrant colours throughout its extensive focal length range. And once you've included the Optical Image Stabiliser, Ultrasonic Motor, advanced movie capabilities and Canon's Visionary Technologies it's easy to see how the PowerShot S2 IS gives you the flexibility to take your creativity to another level.



5.0 MEGA PIXELS PACKED WITH POWER

The PowerShot S2 IS features a 5.0 megapixel CCD sensor – more than enough resolution to ensure crisp, clean details in every shot, and photo quality prints up to A3.



DIGIC II HIGH SPEED DIGIC II PROCESSOR

Canon's exclusive next generation DIGIC II processor optimises the PowerShot S2 IS's performance every time you take a shot. You'll see the results instantly – superb image quality, faster and more accurate auto focus performance*, more responsive camera controls and longer, higher quality movies. And by making the camera run so smoothly, the DIGIC II processor also allows for extended battery life.



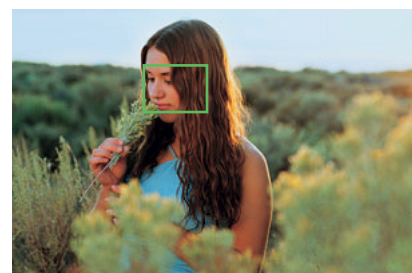
ISAPS TECHNOLOGY

Even before the shutter release is pressed, Canon's unique iSAPS (Intelligent Scene Analysis based on Photographic Space) evaluates your composition and compares it against a vast in-camera database of different images and settings, dramatically improving the camera's ability to interpret shooting situations and deliver brilliant images without delay.



FLEXIZONE AF/AE

The FlexiZone AF/AE function lets you freely scroll the auto focus area around the scene to select the subject you want to focus on. Your exposure is then automatically weighted for your selection.



FlexiZone AF/AE

*AF speed is approximately 45% faster than with its predecessor

Unparalleled lens performance.

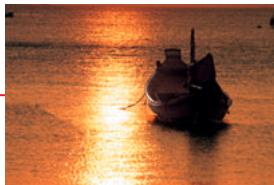
With more than 60 years of optical engineering heritage, you know that every Canon lens will be of an exceptionally high standard – and the PowerShot S2 IS is no different. Its remarkable 12x optical zoom incorporates a UD lens element, Optical Image Stabiliser and Ultrasonic Motor to ensure razor sharp definition and crisp, stunning colours in every shot and movie – as well as quick compositions.

12x 12X OPTICAL ZOOM

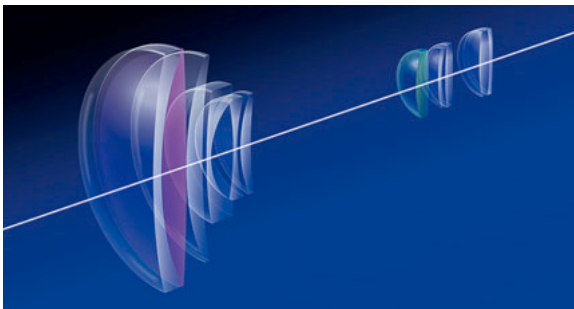
OPTICAL ZOOM Giving you a 35mm equivalent focal length range of 36mm to 432mm, and maximum aperture of f/2.7 to f/3.5, the PowerShot S2 IS's brilliantly versatile 12x optical (48x combined) zoom lens allows you to shoot a huge variety of scenes – from landscapes and nature shots to sports events and portraits. A UD (Ultra-low Dispersion) lens element – which reduces chromatic aberration – is key to the lens's superior performance and sharpness.



36mm equivalent



432mm equivalent



The 12x optical zoom lens consists of 11 elements in 9 groups (including 1 aspherical and 1 UD element)

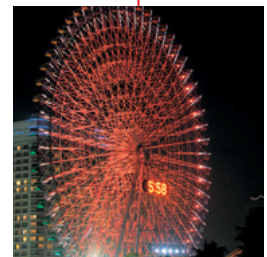


OPTICAL IMAGE STABILISER (IS)

The PowerShot S2 IS's Optical Image Stabiliser (IS) uses tiny gyroscopes to detect the slightest camera shake and correct it before it can cause a blurred image. Perfect for when a tripod is not available, the IS lens group actually shifts within the lens casing to counteract any shaking – resulting in clearer, sharper images even in low light conditions and at slow shutter speeds. You can also choose from one of four IS modes (Off/Continuous/Shoot Only/Panning – 'Off' and 'Continuous' can also be selected in movie mode) to give you maximum control over your shot.



Without IS



With IS



ULTRASONIC MOTOR (USM)

ULTRASONIC With Canon's renowned Ultrasonic Motor technology driving the PowerShot S2 IS's zoom lens you can be sure of super-fast, near silent zooming action*. This is essential for making quick compositions and for zooming in when shooting movies, as the virtually silent motor won't be heard on the audio.

*Level of speed and noise depends on whether you're in movie or still mode.

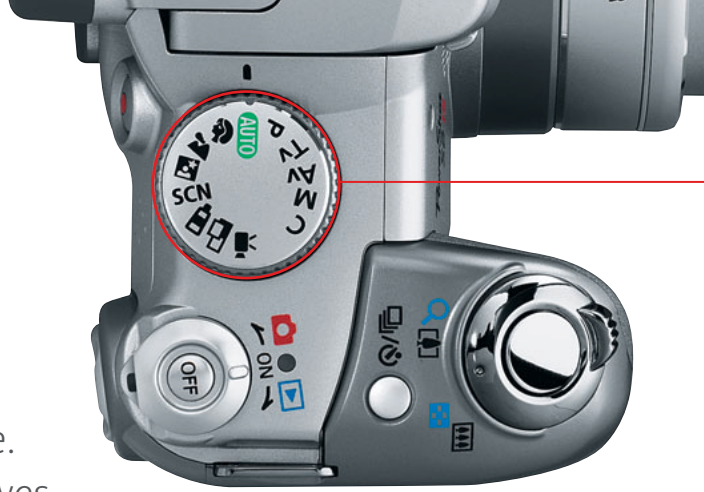


0cm 0in. SUPER MACRO MODE

The PowerShot S2 IS also features a super macro mode – meaning the camera achieves pin-sharp focus no matter how close you get to your subject (shooting distance can be as close as 0cm whether you are shooting stills or movies). Ideal for capturing the intricate beauty of the patterns created by nature.

Advanced movie technology.

Sometimes the only way to capture all the atmosphere of a scene is to shoot it as a movie. The PowerShot S2 IS's superior movie mode gives you all the tools you need to capture it all and deliver results so stunning, you won't believe they came from a camera.




 **1.8" LCD**
Twist it, turn it, Vari-angle fold it, swivel it – the PowerShot S2 IS's vari-angle LCD allows you to shoot with confidence from virtually any angle.



PHOTO IN MOVIE

Photo in Movie Just because you've decided to record movie footage shouldn't mean you've decided not to take stills. In fact, you don't even have to switch back to stills mode. With the PowerShot S2 IS's Photo In Movie function, you can just start shooting* – taking great stills whilst recording movie footage.

*Depending on the size and speed of your memory card.



PREMIUM QUALITY. STEREO SOUND

30 fps / VGA

Record your movies at 30 or 15 frames per second, in VGA or QVGA resolution with up to two hours of full stereo sound. Optical image stabilisation, the Ultrasonic Motor and a series of advanced shooting features all combine to give you filming abilities to rival many dedicated camcorders. You can continuously record up to 1GB* of action – and edit it on the go to save space with the movie playback feature.

START RECORDING ANY TIME

With the PowerShot S2 IS you simply press the dedicated movie button to start recording right away. The camera automatically adjusts the exposure, focusing and white balance as you film. But that's not all. While recording in movie mode you can also use the camera's optical and digital zoom and manual focus functions, giving you amazing creative flexibility.

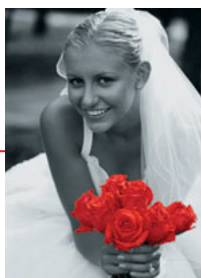


Your modes. “My Colors”.

The PowerShot S2 IS features a huge variety of creative and automatic shooting modes (18 shooting modes in total, including 6 special scene modes and My Colors), to give you more creative control over your shots than ever before.



“Color Accent”



“MY COLORS” ◀

My Colors Canon’s “My Colors” shooting feature allows you to alter the colours of your image or movie – on the camera’s LCD – giving you creative options you’d normally only be able to realise at home on your computer. Simply select one of the 9 sub-modes before taking your shot: Vivid Red, Vivid Blue, Vivid Green, Positive Film, Lighter Skin Tone, Darker Skin Tone, “Color Accent”, “Color Swap” or “Custom Color”. You can then decide whether you wish to keep both the original image and edited image or just the edited image (if you use “My Colors” while recording a movie, only the edited movie will be saved).

- AUTO**
- PORTRAIT**
- LANDSCAPE**
- NIGHT SCENE**

STITCH ASSIST

Using the supplied PhotoStitch software, this feature lets you shoot a sequence of up to 26 images and then merge them together into a larger image to create long panoramas.

MOVIE

Shoot stunning VGA or QVGA quality movies in sumptuous stereo sound at either 30 or 15 frames per second. You can then play it back and edit it instantaneously using the camera’s LCD.

SPECIAL SCENE MODES

Choose from one of six specially stored presets created to let you achieve great results in common shooting situations without having to use the manual controls.

- FOLIAGE**
- SNOW**
- BEACH**
- FIREWORKS**
- INDOOR**
- NIGHT SNAPSHOT**

CUSTOM

Allows you to select your own preferred combination of settings and save them for quick access.

SHUTTER SPEED PRIORITY*

In this mode you can freeze a moving subject or create a blurred, flowing effect by controlling the shutter speed. The camera automatically selects the best aperture based on the available light.

APERTURE PRIORITY* ▼

You control the depth-of-field with this mode by setting the aperture. The camera then automatically selects the appropriate shutter speed for perfect exposure.



PROGRAM

The camera automatically sets both the shutter speed and aperture. You control all the other parameters such as white balance and flash.



MANUAL ▲

When you want complete control, this allows you to set all the parameters for your shot, including aperture, shutter speed and focus.

*Switching on the safety shift function protects against over or underexposure by automatically shifting the settings to compensate for the conditions – but only as far as necessary while staying as close to your intended effect as possible.

When the shooting stops the sharing starts.

You'll be proud of all your stills and movies with the PowerShot S2 IS, so when you want to print, share or email them, Canon technology makes it simple, quick and hassle-free.

DIRECT PRINT, MOVIE PRINT, PERFECT PRINTS

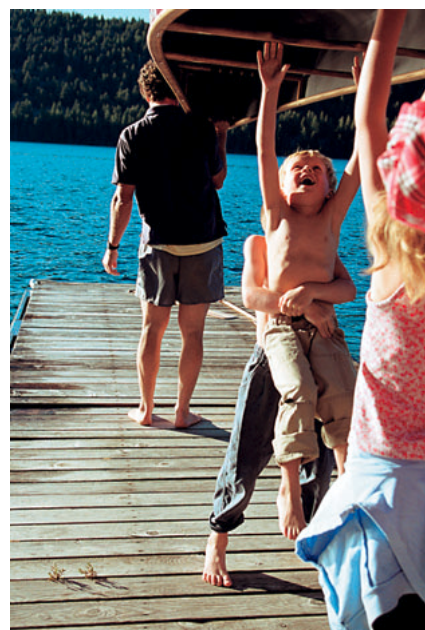
The PowerShot S2 IS is PictBridge compliant, meaning you can print directly to any PictBridge-compatible printer – with enough resolution to go all the way to A3 depending on your printer. All Canon SELPHY Compact Photo (CP) Printers and many of Canon's Pixma printers are supported. The camera's Movie Print feature allows you to either print a

frame-by-frame index print of your movies on a single page (Sequence*), or select a specific frame and print it alone on a single sheet (Single).

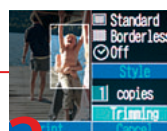
*Sequence print is only possible when using a Canon SELPHY CP printer



The PowerShot S2 IS has Hi-Speed USB 2.0 capability for even faster image data transfer.



1 CONNECT
your camera directly to the printer.



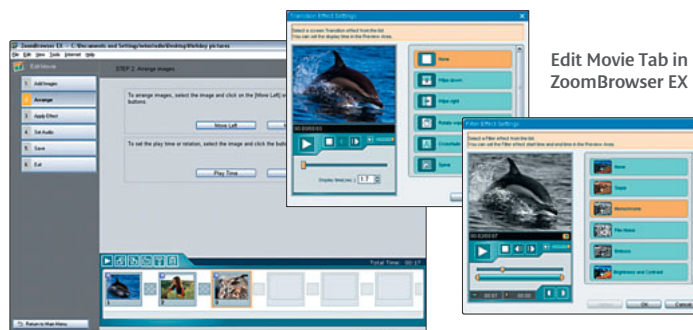
2 SELECT
the image you want – crop or trim for maximum effect.



3 PRINT
your pictures in a variety of sizes.

IMAGE MANAGEMENT

High-performance software applications that let you manage and manipulate your images (both stills and movies) are included as standard with the PowerShot S2 IS. ZoomBrowser EX (for Windows) and ImageBrowser (for Mac) allow you to manage, archive, and retouch all your favourites. Integrated into this software is the RemoteCapture Task for taking pictures remotely via your computer, and the Edit Movie Tab, so you can edit and join your clips together just like a film director. PhotoRecord (Windows only) lets you create and print digital photo albums, with text, backgrounds, picture frames and more, all with easy step-by-step selections.



Edit Movie Tab in ZoomBrowser EX

CANON IMAGE GATEWAY¹ gives you 100MB of free online space for storing your images and movies² – perfect for sharing them all with friends and family.

¹ Not available in all regions
² Upload of movie clips requires a download and installation of the Movie Upload task module from the CANON IMAGE GATEWAY



Take your experience even further.

The PowerShot S2 IS has a variety of optional and in-box accessories that can help expand your creative repertoire and truly enrich your shooting experience – printers, cases, lens converters and much more.

KIT CONTENTS



Neck Strap



4 AA Alkaline Batteries



Lens Cap



SDC-16M
16MB SD Card



Software:
Canon Solutions Disk
ArcSoft PhotoStudio
Apple Quick Time



IFC-400PCU
USB Interface Cable



STV-250N
Stereo Video Cable

OPTIONAL ACCESSORIES

DCC-90
Soft Case



SDC-512MSH
High Speed
SD Card



CBK4-200
NiMH Battery/Charger Kit
(includes battery charger and
4 NiMH NB4-200 batteries)



CA-PS700
AC Adapter Kit



HF-DC1
High Power Flash



Compliant with all
Canon Direct Print
compatible printers



Compliant with all
Canon Pixma printers
supporting PictBridge



Compliant with
all PictBridge
compatible printers



OPTIONAL LENS ACCESSORIES



TC-DC58B
1.5x Tele
Converter



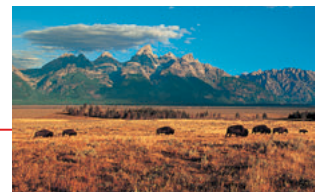
648mm equivalent with Tele Converter



432mm equivalent



LAH-DC20
Lens Adapter/
Hood Set



36mm equivalent



WC-DC58A
0.75x Wide
Converter



27mm equivalent with Wide Converter



500D
(58mm)
Close-up Lens

Specifications PowerShot S2 IS

IMAGE SENSOR Type Effective Pixels Total Pixels Aspect Ratio Colour Filter Type	1/2.5" CCD Approx. 5.0M Approx. 5.3M 4:3 Primary Colour
IMAGE PROCESSOR Type	DIGIC II with iSAPS technology
LENS Focal Length Zoom Maximum f/number Construction Image Stabilisation Ultrasonic Motor (USM)	6.0-72.0mm (35mm film equivalent: 36 – 432mm) Optical 12x, digital approx. 4x, combined approx. 48x f/2.7 – f/3.5 11 elements in 9 groups (1 aspherical element, 1 UD element) YES (shift-type) YES, zoom
FOCUSING Type AF System/Points AF Modes AF Point Selection Selected AF Point Display AF Lock AF Assist Beam Manual Focus Focus Bracketing Closest Focusing Distance	TTL 1 point AF (any position is available) Single, Continuous Manual selection using FlexiZone AF/AE Indicated on rear LCD monitor On/Off Selectable YES (on/off) YES YES 0cm
EXPOSURE CONTROL Metering Modes AE Lock Exposure Compensation AEB ISO Speed Equivalent	Evaluative, Centre-weighted average, Spot (centre or linked to focusing frame) YES ±2 EV in 1/3 stop increments 1/3 – 2 EV in 1/3 stop increments AUTO, 50, 100, 200, 400
SHUTTER Type Speed	Mechanical shutter & electronic shutter 15 – 1/3200 sec (Slow Shutter speeds of 1.3 sec and more, available in Manual and Shutter Priority AE modes only. Shutter speeds of 1.3 sec and more operate with noise reduction. Certain combinations of shutter speed and aperture may not be available.)
WHITE BALANCE Type Settings	TTL Auto, Daylight, Cloudy, Tungsten, Fluorescent, Fluorescent H, Flash, Custom
COLOUR MATRIX Type	sRGB
VIEWFINDER Viewfinder Coverage (Vertical/Horizontal) Eyepoint Dioptre Correction Viewfinder Information	EVF (0.33" type), approx. 115,000 pixels 100% 10mm -5.5 – 1.5 dpt Full information
LCD MONITOR Monitor Coverage Brightness	Vari-angle 1.8" Low temperature P-Si TFT, approx. 115,000 pixels 100% Adjustable to one of two levels
FLASH Modes X-Sync Slow Sync Speed Red-eye Reduction Flash Exposure Compensation Flash Exposure Lock Manual Power Adjustment Second Curtain Synchronisation Built-in Flash Range External Flash	Auto, Manual Flash On/Off 1/500 sec (max) YES YES ±2 EV in 1/3 stop increments YES 3 levels with internal flash YES 70cm – 5.2m (W)/4.0m (T) (at ISO AUTO equivalent) Canon's High Power Flash
SHOOTING Modes Photo Effects Drive modes Continuous Shooting Intervalometer	Auto, Program AE, Shutter priority AE, Aperture priority AE, Manual, Custom, Portrait, Landscape, Night Scene, "My Colors", Stitch Assist, Movie, Special Scene mode (Foliage, Snow, Beach, Fireworks, Indoor, Night Snapshot) Vivid, Neutral, Low Sharpening, Sepia, Black & White, Custom, "My Colors" (9 settings) Single, Continuous, Self-Timer High Speed at approx. 2.4 fps ¹ (until memory card becomes full) ² Normal at approx. 1.5 fps ¹ (until memory card becomes full) ² Up to 100 shots in 1 – 60 minute increments ²

RECORDING PIXELS/ COMPRESSION Image Size Compression Movies Movie Length	(L)2592 x 1944, (M1)2048 x 1536, (M2)1600 x 1200, (S)640 x 480 Superfine, Fine, Normal (L)640 x 480, 30/15fps (M)320 x 240, 30/15fps Up to 1GB or 60 min.
FILE TYPES Still Image Type Movies Sound Files	JPEG compression, (Exif 2.2 [Exif Print] compliant)/Design rule for Camera File system, Digital Print Order Format (DPOF) Version 1.1 compliant AVI [Motion JPEG compression + WAVE (stereo)] WAVE (stereo)
DIRECT PRINT Canon Printers PictBridge	Canon SELPHY Compact Photo Printers and PIXMA Printers supporting PictBridge (ID Photo Print, Movie Print supported on SELPHY CP printers only) YES
OTHER FEATURES My Camera Sound Memo Intelligent Orientation Sensor Histogram Playback Zoom Display Formats Image Erase Protection Image Erase Self Timer Menu Categories Menu Languages Firmware Update	Start-up image and camera sounds customisation Up to 60 sec per image YES YES 2x – 10x Single/Index (9 thumbnail images)/Slide Show/Magnified/Movie Single image Single image, All Approx. 2 or 10 sec or Custom (1) Recording Menu, (2) Playback Menu, (3) Set-up Menu, (4) My Camera Menu, (5) Function Menu English, German, French, Dutch, Danish, Finnish, Italian, Norwegian, Swedish, Spanish, Simplified Chinese, Chinese (traditional), Japanese, Russian, Portuguese, Korean, Greek, Polish, Czech, Hungarian, Turkish Update possible by the user
INTERFACE Computer Other	USB 2.0 High Speed (Mini-B, PTP) A/V output (PAL/NTSC)
MEMORY CARD Type	Secure Digital (SD) Card 16MB SD card supplied
SUPPORTED OPERATING SYSTEM PC Macintosh	Windows 98SE/Me/2000 SP4/XP/XP SP1-2 OS X v10.1.5 – 10.3
SOFTWARE Browsing & Printing Other Drivers Image Manipulation	ZoomBrowser EX (PhotoRecord)/ImageBrowser PhotoStitch, RemoteCapture TWAIN (Windows 98/2000), WIA (Windows Me) ArcSoft PhotoStudio
POWER SOURCE Batteries Battery Life Power Saving A/C Power Supply	4x AA-size Alkaline batteries (included), NiMH Approx. 130 shots (with supplied batteries) ³ , 210 min for movies Approx. 550 shots (with optional Canon NB-2AH batteries) ³ , 300 min for movies Approx. 800 min playback (with supplied batteries) Approx. 900 min playback (with Canon NB-2AH batteries) Display turns off after 10, 20, 30 sec, 1, 2, 3 min Optional, Power adapter CA-PS700
ACCESSORIES Case Lenses Flash Power Supply & Battery Chargers	Soft Case DCC-90 Tele-converter 1.5x TC-DC58B, Wide-converter 0.75x WC-DC58A, Lens adapter/Hood set LAH-DC20, Close-up lens 500D (58mm) High Power Flash HF-DC1 Battery Charger Kit CBK4-200, Ni-MH Batteries NB4-200, Compact AC Power Adapter CA-PS700
PHYSICAL SPECIFICATIONS Operating Environment Dimensions (WxHxD) Weight (body only)	0 – 40°C, 10 – 90% humidity 113.0 x 78.0 x 75.5mm (excluding protrusions) Approx. 405g
¹ Large/Fine with LCD monitor off ² Depending on memory card speed/capacity ³ Based on the CIPA Standard and using the batteries and memory card format supplied with the camera, except where indicated	
Some images are simulated for clarity of reproduction. All data is based on Canon standard testing methods except where indicated. Specifications are subject to change without notice. ™ and ©: All company and/or product names are trademarks and/or registered trademarks of their respective manufacturers in their markets and/or countries.	

5.0
MEGA
PIXELS

12x
OPTICAL
ZOOM

OPTICAL
IMAGE
STABILIZER

ULTRASONIC

DIGIC
II

Movie
30fps / VGA

FlexiZone
AF/AE
CONTROL

Special
Scene
Mode

My Colors

Designed for
Microsoft®
Windows®XP

PictBridge

DIRECT
PRINT

Print/Share
BUTTON

HI-SPEED
USB

CANON
IMAGE
GATEWAY

MultiMediaCard
SD

Exif Print

DPOF

you can
Canon

Canon Inc
www.canon.com

Canon Europa NV
www.canon-europe.com

© Canon Europa NV 2005

Canon UK Ltd
Woodhatch
Reigate
Surrey
RH2 8BF

www.canon.co.uk

